

ABS Quality
Evaluations
AN ABS GROUP COMPANY



ABS Group



ABS Group of Companies

ABS Group is a wholly-owned subsidiary of the American Bureau of Shipping (ABS),

the leading classification, certification and verification firm in the world

for marine shipping, offshore and onshore industries.



ABS Quality Evaluations
AN ABS GROUP COMPANY

ABS Group

ABS Group strives to be the global leader in mitigating risk, improving **safety**, enhancing **quality** and minimizing adverse **environmental** impact. **ABS QE is one of the ABS Group companies.**

ABS Consulting
AN ABS GROUP COMPANY

Safety, Risk, Integrity
and Performance
Management Services

EQECAT
AN ABS GROUP COMPANY

Catastrophe
Risk Modeling

ABS Quality Evaluations
AN ABS GROUP COMPANY

Management
Systems Certification

MARKETS WE SERVE

OIL & GAS
MARITIME
RENEWABLE ENERGY
GOVERNMENT
NUCLEAR

AEROSPACE
AUTOMOTIVE
MANUFACTURING
ENERGY
MARINE

INSURANCE
REINSURANCE
FINANCIAL

Protection of life, property and the environment

ABS Group

A Global Safety,
Risk, Integrity
and Performance
Management
Company

- US
- Europe
- Latin America
- Asia Pacific
- Middle East

ABS Group Locations



North America

- Arlington, VA
- Austin, TX
- Charleston, SC
- Ciudad del Carmen, Mexico
- Glen Burnie, MD
- Guadalajara, Mexico
- Hackensack, NJ
- Highlands Ranch, CO
- Houston, TX
- Irvine, CA
- Knoxville, TN
- Mexico City, Mexico
- Monterrey, Mexico
- New London, CT
- Oakland, CA
- Reynosa, Mexico
- Rockville, MD
- Salt Lake City, UT
- San Antonio, TX
- St. Louis, MO
- Toronto, Canada
- Veracruz, Mexico

South America

- Bogota, Colombia
- Chuao, Venezuela
- Lima, Peru
- Macaé, Brazil
- Manaus, Brazil
- Montevideo, Uruguay
- Porto Alegre, Brazil
- Rio de Janeiro, Brazil
- Salvador, Brazil
- Santos, Brazil
- Sao Paulo, Brazil
- Vina del Mar, Chile

Asia Pacific

- Ahmedabad, India
- Bangkok, Thailand
- Beijing, China
- Busan, Korea
- Hanoi, Vietnam
- Kaohsiung, Taiwan
- Kepulauan Riau, Indonesia

- Kuala Lumpur, Malaysia
- Navi Mumbai, India
- New Delhi, India
- Perth, Australia
- Seoul, Korea
- Shanghai, China
- Singapore, Republic of Singapore
- Tokyo, Japan
- Yokohama, Japan

Europe

- Aberdeen, United Kingdom
- Athens, Greece
- Barcelona, Spain
- Derby, United Kingdom
- Gloucestershire (Bristol), United Kingdom
- Glasgow, United Kingdom
- Genoa, Italy
- Hamburg, Germany
- Istanbul, Turkey
- Las Arenas (Bilbao), Spain
- London, United Kingdom
- Madrid, Spain

- Oslo, Norway
- Paris, France
- Rotterdam, The Netherlands
- Sofia, Bulgaria
- Stavanger, Norway
- Trondheim, Norway
- Warrington, United Kingdom

Middle East

- Abu Dhabi, United Arab Emirates
- Ahmadi, Kuwait
- Dhahran, Saudi Arabia
- Doha, Qatar
- Dubai, United Arab Emirates

Africa

- Lagos, Nigeria

ABS Consulting Overview

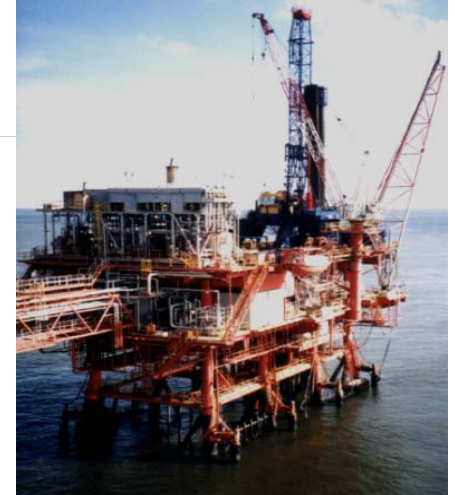
We offer a diverse range of services:

- Asset Integrity Management
- Project Quality Management
- Risk Analysis & Modeling
- Blast Hazard Analysis
- Procurement Inspection & Auditing
- Reliability & Maintenance Management
- Design Assessment
- Process Safety & Safety Culture
- Training

ABSG Consulting Group (ABS Consulting) is a leading independent, global provider of **safety, risk, integrity** and **performance** management services that combines industry experts, risk modeling, practical engineering and technology-based solutions.

Through a comprehensive and integrated risk management approach, ABS Consulting is committed to helping clients manage their operational, security and catastrophic risks to maintain the integrity of their business operations and drive organizational performance.

“Safety, Risk, Integrity and Performance management are the foundation of business excellence.”



EQECAT Overview

Catastrophic risk modeling software and consulting services with offices in US, Japan, UK and France whose clients include:

- AON RE Services, Inc.
- Benfield Greig
- Guy Carpenter & Co.
- Munich RE
- Renaissance RE
- Swiss RE Capital Markets
- Texas Instruments
- Willis RE, Inc.

A trusted advisor to insurance, reinsurance and financial markets, EQECAT enables clients to successfully manage their business risk and provides practical, state-of-the-art catastrophe risk modeling products and services such as:

- **Catastrophe Models** – data for customers to evaluate potential and probability of risk/financial loss from natural hazards and terrorism risk.
- **CATWatch Reports** – critical event information including spatial distribution of damage, potential post-event effects, and in many cases, insured and economic loss estimates.
- **Consulting Services** – customized solutions
- **WORLDCATenterprise™** – catastrophe risk modeling software platform that enables clients to quantify and manage the potential financial impact of 181 natural hazards including models for 95 countries spanning six continents.

*“One catastrophic event
can change all facets of daily
business operations.”*

ABS Quality Evaluations Overview

Accredited for the following management systems:

- AS 9003
- AS 9120
- ISO 13485
- RC14001
- TL 9000
- OHSAS 18001
- ISO/TS 16949:2002
- AS9100
- ISO 9001
- ISO 14001
- RCMS®

Management System auditing and certification body accredited by:

- ANAB (ANSI-ASQ National Accreditation Board) – the US accreditation body for management systems; accrediting certification bodies for ISO 9001 quality management systems, ISO 14001 environmental management systems and a number of industry-specific requirements
- RvA (Netherlands)
- INMETRO (Brazil)
- EMA (Mexico)
- IAOB (International Automotive Oversight Bureau)

We offer third-party certification services, first and second (supplier) party assessments and training.

Sample clients include BASF Corporation, Delphi Automotive Systems Do Brasil, LTDA., Dupont, Embraer Empresa Brasileira DE Aeronautica, Federal Aviation Administration (FAA), Nabors International, Inc. and Worthington Steel Corp.



*“ True quality management
is the ability to adhere
to the highest standards.”*

ABS Quality
Evaluations
AN ABS GROUP COMPANY





Expert Management System Services

ABS Quality Evaluations

Accredited for the following management systems:

- AS 9003
- AS 9120
- ISO 13485
- RC14001
- TL 9000
- OHSAS 18001
- ISO/TS 16949:2002
- AS9100
- ISO 9001
- ISO 14001
- RCMS®



ABS QE is a Management System auditing and certification body that offers:

- Third-party certification services
- First and second (supplier) party assessments
- Training



Our Quality Improvement Solution

Markets We Service

- Oil & Gas (Upstream & Downstream)
- Process Manufacturing (Petrochemical, Pharmaceutical)
- Marine
- Automotive & Parts
- Aerospace & Parts
- Water & Electrical Utilities
- General Manufacturing
- Steel & Other Metal Fabrication
- Construction
- Services Industry

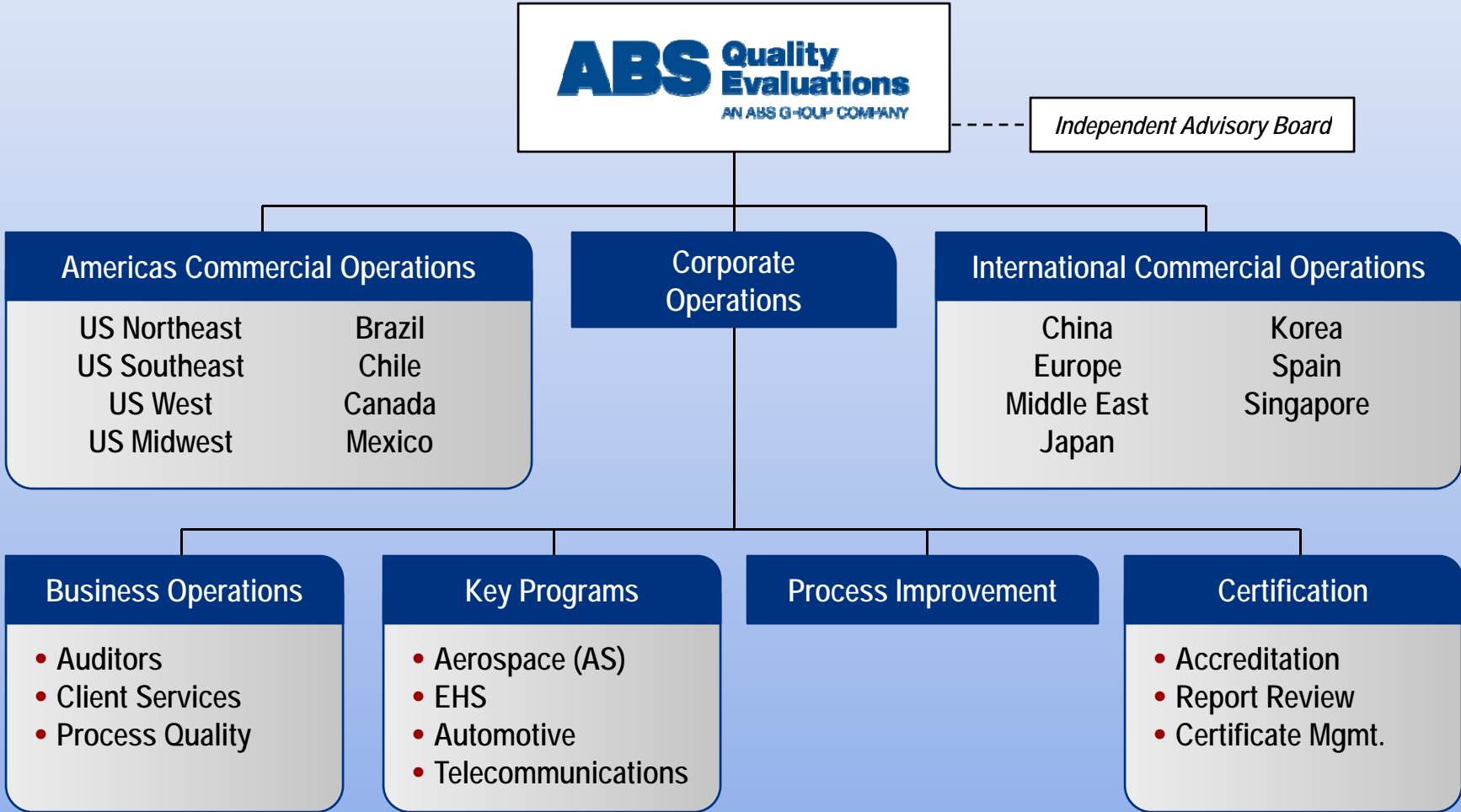


Our client solutions include management systems services and certification to:

- Management Systems Standards
- Training Solutions
- Industry Standards
- Customized Solutions

ABS QE has the ability to turn client needs into solutions and is a contributor to the development of industry, national, and international standards including the International Organization for Standardization (ISO), a non-governmental developer of standards for business government and society

ABS QE Global Structure



Standards

Management Systems Standards

- ISO 9001 (Quality Management Systems)
- ISO 14001
(Environmental Management Systems)
- OHSAS 18001
(Occupational Health & Safety)
- ISO 50001
(Energy Management Systems)
- ISO 27001
(Information Security Management Systems)
- SA 8000 and Business Social Compliance Initiative (Corporate Sustainability)
- ISO 28000
(Supply Chain Security Management)
- Integrated Management Systems

Industry Standards

- ISO/TS 16949 (Automotive)
- AS 9100, AS 9003, AS 9120 (Aerospace)
- ISO 13485 (Medical Devices)
- TL 9000 (Telecommunications)
- ISO 22716 and GMP
(Pharmaceutical and Cosmetics)
- ISO 29000 (Oil and Gas)
- ESD S20.20 (Electronics Industry)
- RC 14001[®] and RCMS[®]
(Responsible Care)
- Pressure Equipment Directive 97/23/EC
(PED)
- Integrated Management Systems

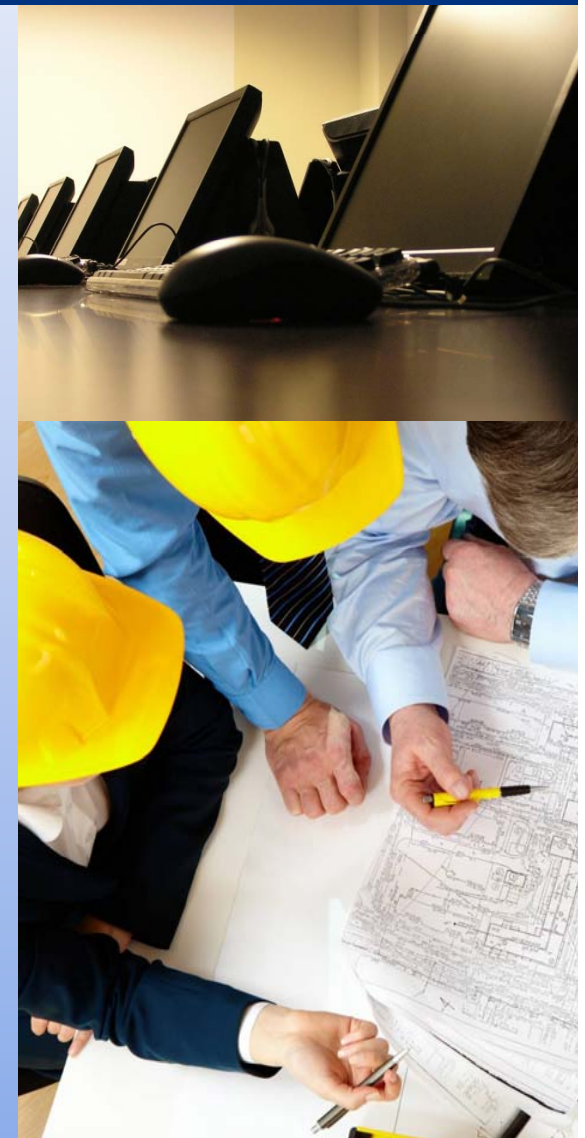
Solutions

Training Solutions

- In-house and public training offering
- Awareness/Management Overview Training
- Internal Auditor Training
- Lead Auditor Training
- Process Improvement
- Implementation Courses
- Corporate Sustainability Training Courses
- Various industry – specific training

Customized Solutions

- First and second party assessments
- Gap analysis against management systems standards
- Supply chain assessments
- Audits against customized criteria
- Supplier audits against customer's criteria
- Assessment to specified public guidelines and principles



Working with a Certification Company

Case Study: Embraer

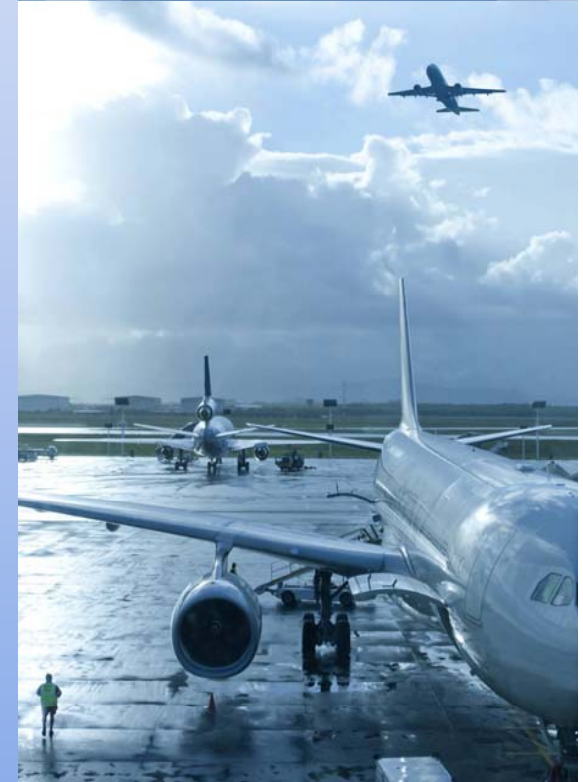
Embraer, a worldwide manufacturer of aerospace parts, with more than 70,000 employees, based in Brazil, teamed up with ABS Quality Evaluations to help the company stay up to date with the certifications that would ultimately meet Embraer's customer and supplier requirements.

Eduardo Lorenzo Castro, Corporate Quality Manager at Embraer, cited "global support as an important factor that they looked for when choosing a company to help."

Lorenzo says that "quality practices and continual improvement automatically have followed after the certification process and this helps not only improve quality as an end result but stay competitive in the market."

Embraer has achieved certification and registration including AS 9100 and ISO 9001.

To hear the full case study and view other client testimonials visit...
<http://www.abs-qe.com/testimonials.cfm>



Globally Recognized Accreditations

Accredited registration to recognized quality, health and environmental management system standards, including:

- ANAB
 - ISO 9000
 - AS 9003, AS 9100, AS 9120
 - TL 9000
 - ISO 14001
 - Responsible Care RCMS®
 - Responsible Care RC14001
 - ISO 13485
- RvA
 - ISO 9001
 - ISO 14001
 - ISO/IEC 27001
 - OHSAS 18001
- INMETRO (Brazil)
 - ISO 9001
 - ISO 14001
- INN (Chile)
 - ISO 9001
 - ISO 14001
- EMA (Mexico)
 - ISO 9001
 - ISO 14001
- IATF
 - ISO/TS 16949:2002
- SAAS
 - SA 8000
 - BSCI
- ESD
 - Electro Static Discharge



Certification Process

Pre-assessment

- Optional but recommended
- Flexible format and value generating
- Improved first time success percentage for certification

Stage One Certification

- On-site review of your documentation
- Site survey to confirm that your management system is properly documented, consistent with the standard's to which you want to certify
- Evaluation to proceed to the Stage Two Certification Assessment

Stage Two Certification

- Evaluation of the management system against the international standards to which you want to certify
- You will receive a report detailing any non-conformances where the system is deficient and which require corrective action prior to certification.
- When the corrective actions have been cleared, you will receive a formal certificate and be automatically enrolled in our NetCert service to provide easy access to your certifications for your customers and other outside parties.

Surveillance

- Annual or six month surveillance assessments are conducted during the three year validity of the certificate
- Process Auditing
- At each surveillance some aspect of internal assessments, corrective and preventive action and management responsibility will be reviewed

Re-certification

- Assessment at the end of the three year period
- Our audit approach continues to aim to contribute value to the process and also ensure that your management system is achieving your goals.

Why Partner with ABS QE?

- Dedicated client service delivery model
- Global network of highly experienced staff and auditors providing superior service and results oriented audits
 - Designated staff to service you
 - Our Auditors average over 17 years of industry experience
 - Over 70% of our Assessment staff hold engineering degrees and nearly half of our Assessment staff hold multiple degrees or post-graduate degrees
 - Automated tools to manage your certification
 - Knowledge and information transfer from our leading industry experts
- Ability to turn client needs into solutions
- Strong project management at local and international level
- Accredited in management systems certification schemes

Representative Clients

Over 4,500 national and international brands partner with ABS QE



Honeywell



ArcelorMittal



ExxonMobil

ASHLAND



Freeport-McMoRan
Copper & Gold

GENERAL DYNAMICS

Gap Analysis and Verification

Our gap analysis strategy helps management determine whether the current operating performance is the best it can be for their operations.

Management Systems Certification

We help you enhance sustainability through a six-step certification process of quality, safety and environmental management systems.

Supply Chain Assessments

Our audits can help you exceed international accreditation requirements and outpace rigid industry standards and growing competition.

Management Systems Training

